



The Ministry of Mines,  
Industry and Energy

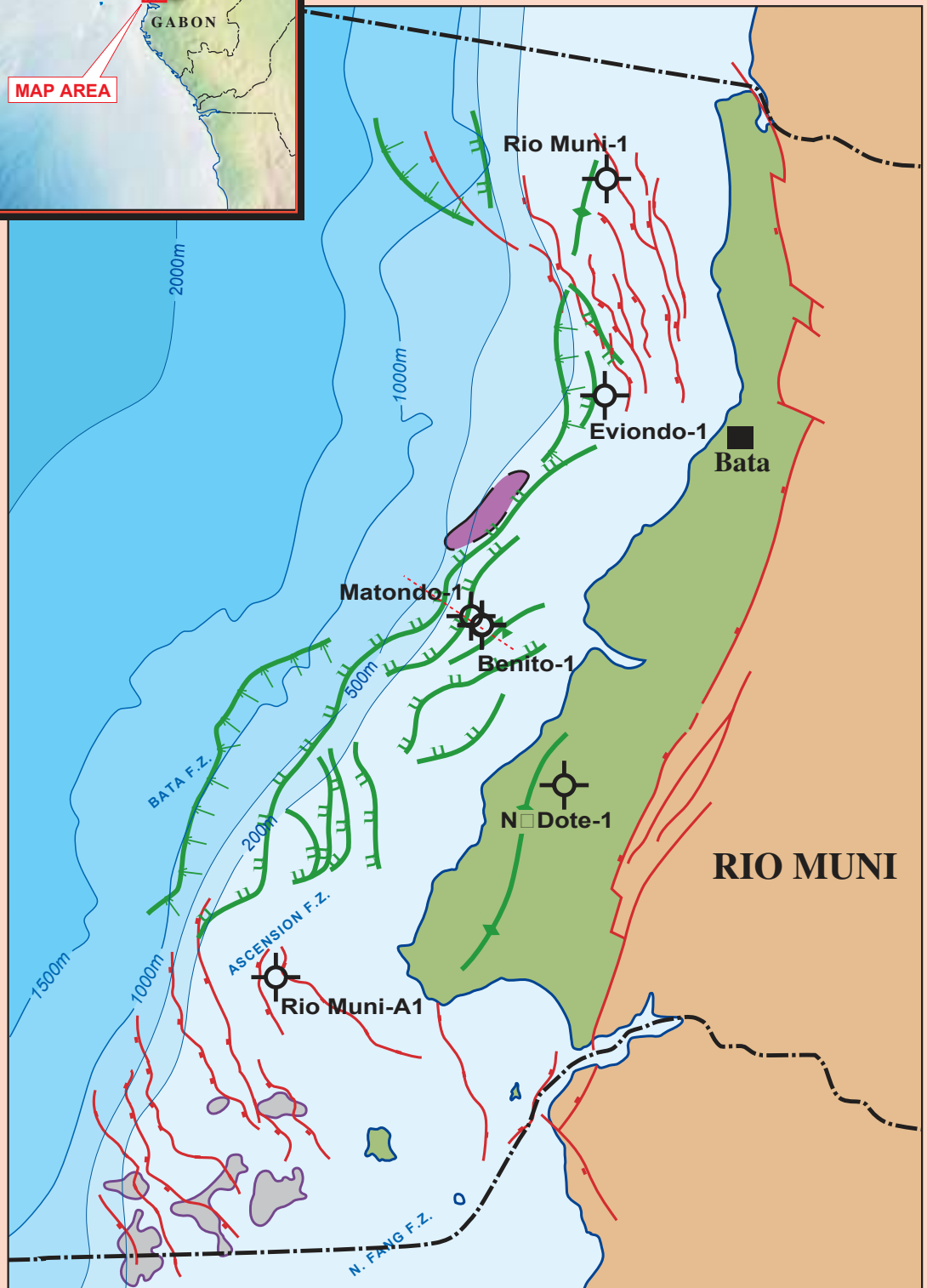
# The Petroleum Potential of Offshore Rio Muni

RPS Energy

**RIO MUNI BASIN, EQUATORIAL GUINEA**



This 1999 fully integrated seismic mapping and prospectivity overview report was based on the full historical seismic and well database. The report identifies pre- and post-salt exploration targets and successfully forecast the Ceiba petroleum system.

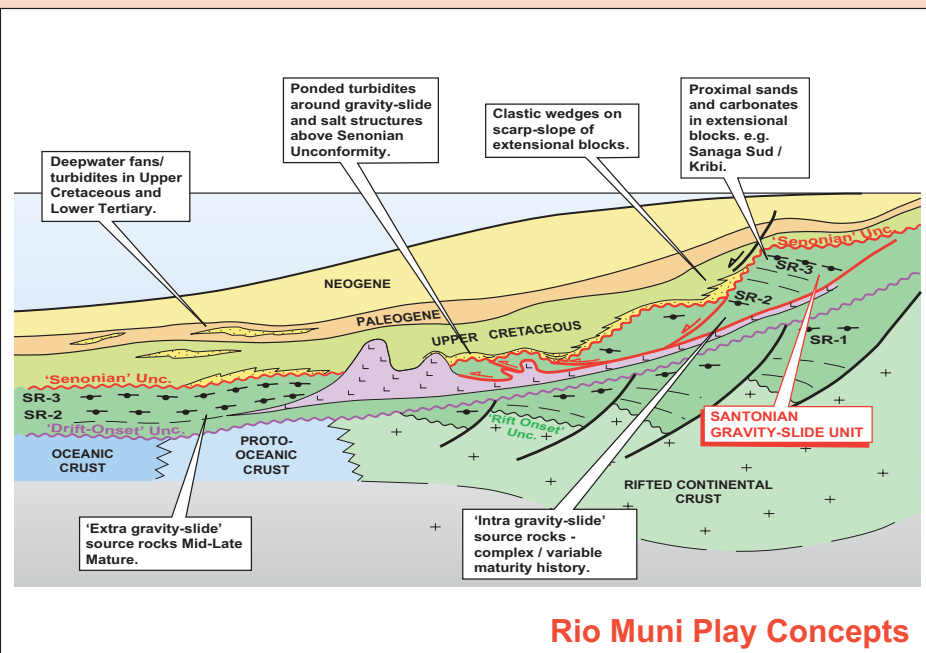
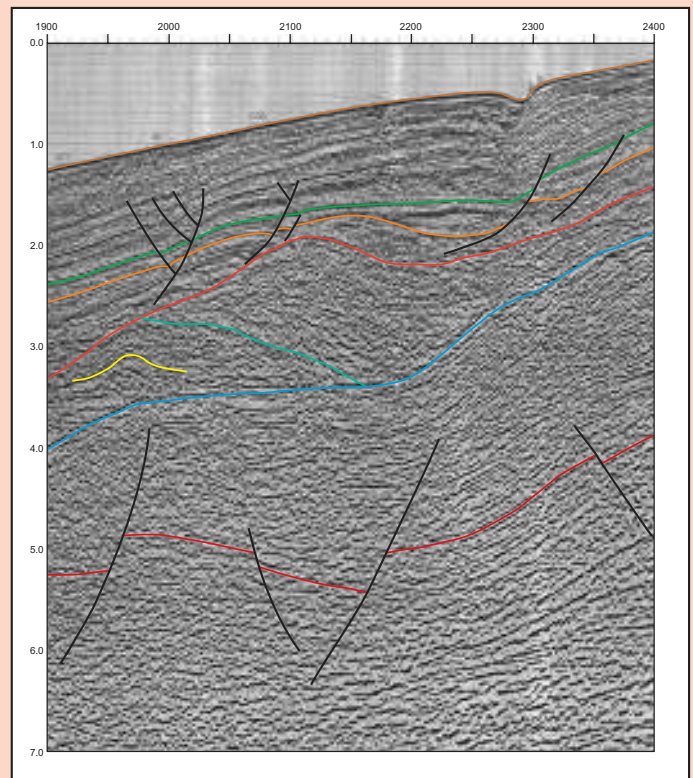


**Containing sections on:**

- ◆ Exploration History
- ◆ Well Post-Mortems
- ◆ Regional Geology
- ◆ Stratigraphic Analysis
- ◆ Seismic Interpretation
- ◆ Petroleum Geology and Potential
- ◆ Basin Modelling / Maturation Studies
- ◆ Play and Prospect Analysis

**Illustrated with 60 text figures and 42 map enclosures including:**

- ◆ Seismic Time and Depth Structure Maps at 1:100,000
- ◆ Prospect Time Structure Maps at 1:50,000 for a total of 8 horizons
- ◆ Prospect Summary Maps at 1:100,000



**also Appendices containing:**

- ◆ Basin Modelling Plots
- ◆ Well Summary Montages
- ◆ Seismic, Well and Report Data Lists

**Price Schedule (US Dollars)**

Single Company Purchase - \$20,000

Group escalations available

**Available in Hardcopy and Digital (Adobe Acrobat) format**

**For further details please contact Richard Heath at:**

**RPS Energy, 309 Reading Road, Henley-on-Thames, Oxfordshire. RG9 1EL, UK**

Tel: +44 (0)1491 415400 email: [heathr@rpsgroup.com](mailto:heathr@rpsgroup.com)  
 Fax: +44 (0)1491 415415 website: [www.rpsgroup.com/energy](http://www.rpsgroup.com/energy)